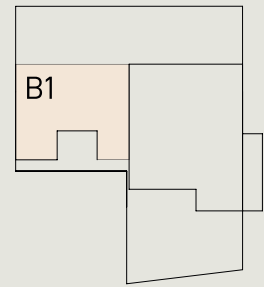


Ebene B

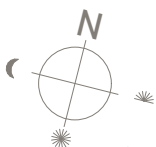
WHG B1 3 1/2



NGF : 136.40m²

Terrasse gedeckt: 39.00m²

Keller / Waschen: 35.80m²



Massstab 1:150 (1cm = 1.50m)

JOY BÄCHLE
IMMOBILIEN

Joy Bächle Immobilien GmbH
Oberer Graben 3
CH-9000 St.Gallen
T +41 (0)71 260 20 28
info@baechle-immobilien.ch
www.baechle-immobilien.ch