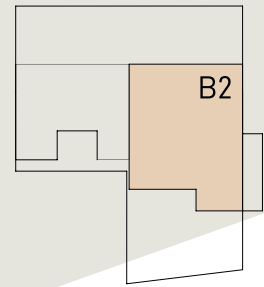


# Ebene B

## WHG B2 5 1/2



NGF: 184.00m<sup>2</sup>

Terrasse gedeckt: 30.70m<sup>2</sup>

Terrasse ungedeckt: 120.20m<sup>2</sup>

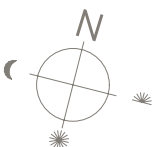
Lichthof: 26.30m<sup>2</sup>

Keller / Waschen: 39.60m<sup>2</sup>



JOY BÄCHLE  
IMMOBILIEN

Joy Bächle Immobilien GmbH  
Oberer Graben 3  
CH-9000 St.Gallen  
T +41 (0)71 260 20 28  
info@baechle-immobilien.ch  
www.baechle-immobilien.ch



Massstab 1:150 (1cm = 1.50m)