

Ebene E

WHG E2 4½

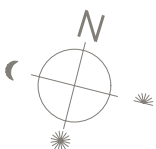
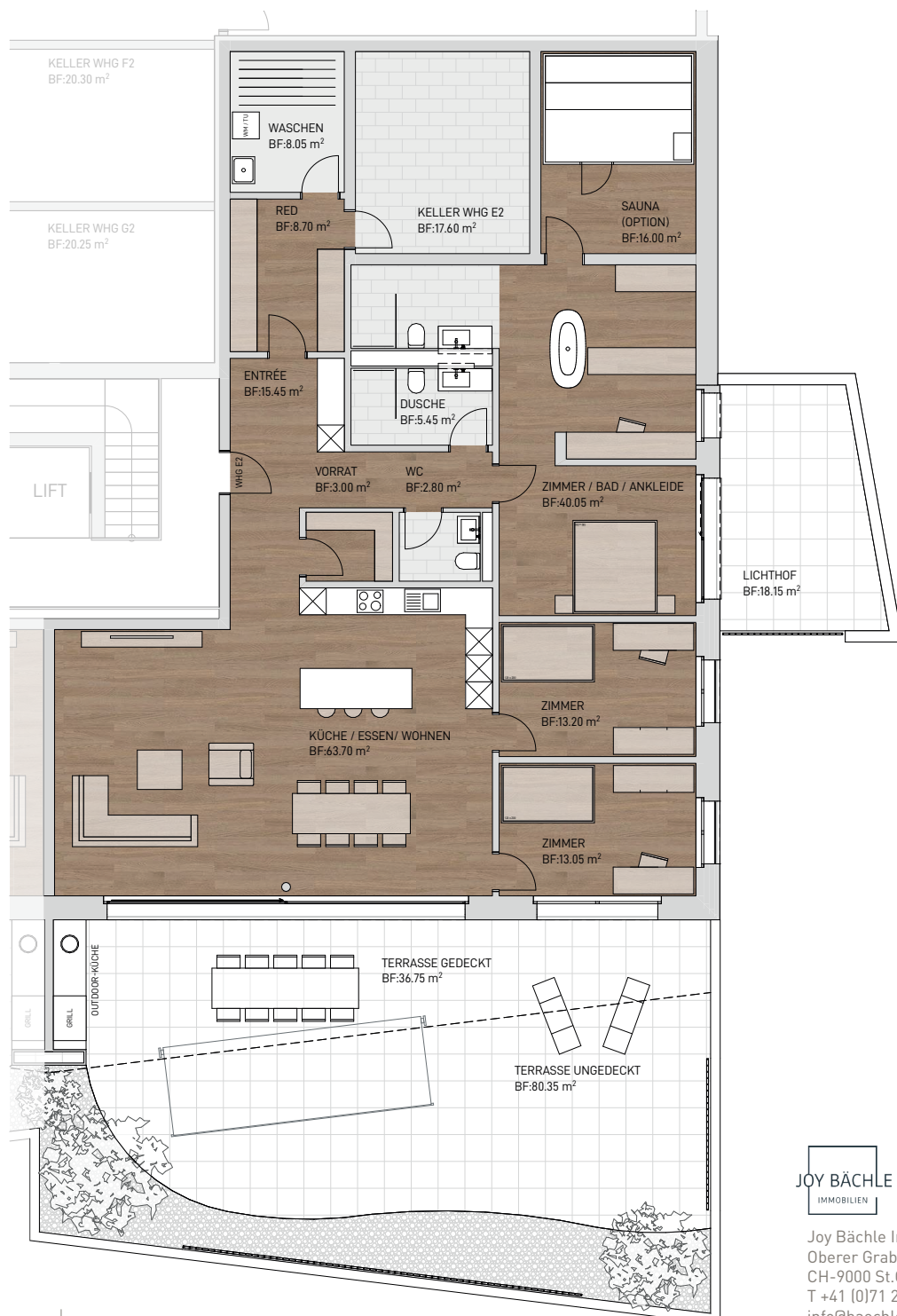
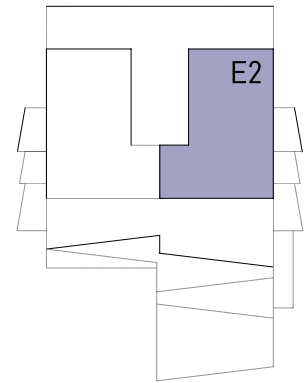
NGF: 165.40m²

Terrasse gedeckt: 36.75m²

Terrasse ungedeckt: 80.35m²

Lichthof: 18.15m²

Keller / Waschen: 41.65m²



Masstab 1:150 (1cm = 1.50m)

JOY BÄCHLE
IMMOBILIEN

Joy Bächle Immobilien GmbH
Oberer Graben 3
CH-9000 St.Gallen
T +41 (0)71 260 20 28
info@baechle-immobilien.ch
www.baechle-immobilien.ch